



# PORT STEPHENS YACHT CLUB

## NOTICE OF RACE

### OFFSHORE SERIES 2021-2022

Issued December 2021

#### 1. ORGANISING AUTHORITY

- 1.1. The Organising Authority is Port Stephens Yacht Club.

#### 2. RULES

- 2.1. Racing shall be conducted under the 2021-2024 Racing Rules of Sailing, and the prescriptions and safety regulations of Australian Sailing as modified by the PSYC Sailing Instructions. This Notice of Race or the Sailing Instructions may be altered, varied, deleted or added to by displaying a written notice in the form of an addendum or amendment on the PSYC Notice Board prior to 0900 hours on any race day, or communicated by the Race Starter on VHS CH77 before the Warning Signal (RRS 90.2c).
- 2.2. If there is a conflict between this Notice of Race and the Sailing Instructions then the Notice of Race shall take precedence.

#### 3. ELIGIBILITY AND ENTRY

- 3.1. This race is opened to keel boats, trailer sailers and multihull classes that are racing members of the PSYC and have a current equipment audit of at least Cat 5 and a minimum of two crew.
- 3.2. Visiting yachts – see the Entries clause of the Sailing Instructions.
- 3.3. All boats must register with Marine Rescue, Port Stephens before leaving the Port (VHF Channel 16 or using the Marine Rescue NSW mobile phone app). All boats must ensure that they contact Marine Rescue Port Stephens as they re-enter the Port to log off as well.

#### 4. OFFSHORE RACING SERIES

- 4.1. The Offshore Racing Series will be conducted as notified on the PSYC Sailing Programme on the PSYC Website and Club Noticeboard.
- 4.2. Drops will be calculated based on 1 drop after 4 races conducted.

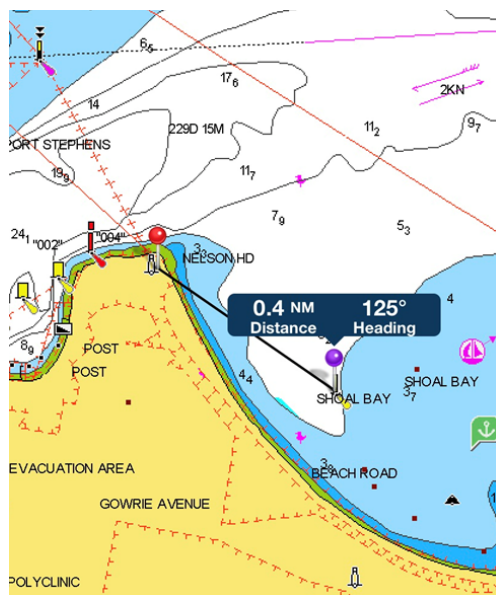
#### 5. STARTING AND FINISHING

- 5.1. **Start/Finish Line 1** will be a line between the Middle Ground Green Lateral Mark and the Fly Point Red Lateral Mark.

## Port Stephens Yacht Club



- 5.2. **Start/Finish Line 2** will be a transit from the PSYC Shoal Bay Mark to Nelson Head Rescue Station flag pole or a laid mark.

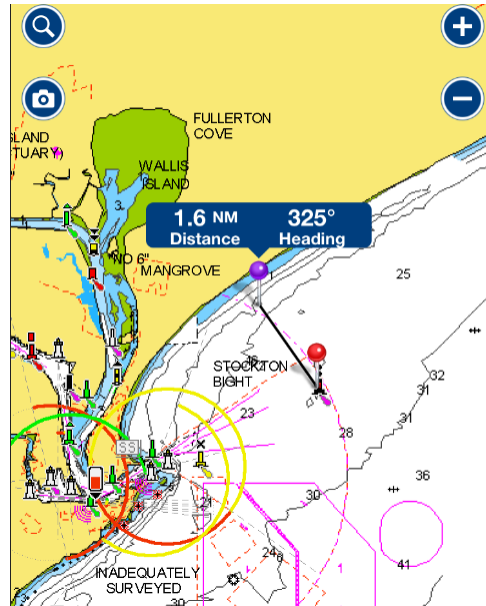


- 5.3. **Start/Finish Line 3** will be a line between the Port Stephens Lighthouse and a line at a bearing of 135 degrees magnetic at a distance of 0.7 nautical miles. The seaward end of the line is located at 32 45.40S 152 12.50E.

## Port Stephens Yacht Club



- 5.4. **PSYC Start/Finish Line** for Port Stephens and Newcastle to Port Stephens courses will be the PSYC Soldiers Point Start/Finish line or a shortened course as advised by the Race Office via VHF77.
- 5.5. **Newcastle Start/Finish Line** for the Newcastle races will be a line between the isolated danger mark located 2nm North east of Newcastle Harbour and the coast at an imaginary line 325 degrees, see below. Yachts are required to record their own time.



- 5.6. **Fullerton Cove Start/Finish line** is to the west of the Special Purpose mark, located at 32 55.228'S 151 59.804'E and a bearing of 325 degrees magnetic to shore and communicated via VHF Channel 77. Yachts are required to record their own time.



## 6. START TIME. AND FINISHING TIMES.

- 6.1. The start time will be 1200hrs or as published on the PSYC Sailing Programme, Website and Noticeboard
- 6.2. Finishing times will be taken by the Club Starters or advised by skippers to the Race Officer via Radio to the Club Starters on VHF Channel 77. If there are no Club Starters available, then via Race Sheet at the PSYC clubhouse.
- 6.3. A time limit of official sunset applies to all races.

## 7. COURSES

- 7.1. Courses are as on the attached Course Sheet.
- 7.2. Course to be sailed will be notified over the radio (VHF Channel 77) prior to the start.

## 8. SUPPORT BOATS

- 8.1. PSYC will designate an appropriate number and type of member yacht(s) participating in each PSYC on-water event, to act as Support Boats for that event.
- 8.2. Support Boats designation(s) will be notified by radio (Ch 77) from the Starters Caravan or by the Race Officer or Vice Commodore prior to the event.
- 8.3. Regardless of this Support Boat provision, attention of all event participants is drawn to Clause 25 of the current PSYC Sailing Instructions. Assistance to Vessel/Person in Distress.

## 9. ASSISTANCE TO VESSEL/PERSON IN DISTRESS

- 9.1. Fundamental Rule 1.1 in the Racing Rules of Sailing 2017-20 (RRS) and the International Convention for Safety of Life at Sea 2009 (SOLAS) and International Rules for Prevention of Collisions at Sea (COLREGS) and the NSW Marine Safety Act 1998 & General Regs 2009, make it the responsibility of all skippers to respond to calls for assistance by another yacht or person in distress.
- 9.2. A skipper or Support Boat responding to a call for assistance may take a record of the time that the yacht leaves the race to provide the assistance and the time that yacht resumes racing after providing assistance for purposes of requesting Redress.
- 9.3. A Request for Redress must be lodged with the Starter or a member of the Race Committee as soon as possible after the yacht finishes. An adjustment to the yacht's elapsed time for the race will be made when the results are calculated.

**10. DISCLAIMER**

- 10.1. All those taking part in PSYC races do so at their own risk and responsibility. The PSYC is not responsible for the seaworthiness of a yacht, the sufficiency or adequacy of its equipment or the competency of its crew.
- 10.2. The PSYC reserves the right to refuse entry to any yacht at any time.
- 10.3. Attention is drawn to the Fundamental Rule 4 which states "A boat is solely responsible for deciding whether or not to start or to continue racing.

**11. INSURANCE**

- 11.1. All yachts participating in PSYC events, including cruises, are required to have valid and current third party liability insurance which includes indemnity for the PSYC.

**12. FURTHER INFORMATION**

- 12.1. For further information please contact:

Rick Pacey - Vice Commodore  
Port Stephens Yacht Club  
Phone 0417 544 230 or Email – [vice.commodore@psyc.com.au](mailto:vice.commodore@psyc.com.au)

or:

Ross MacDonald - Club Captain  
Port Stephens Yacht Club  
Phone 0438 288 684  
Email – [club.captain@psyc.com.au](mailto:club.captain@psyc.com.au)

## **PSYC OFFSHORE COURSES**

The following course descriptions list the order in which marks are to be passed and the side each mark is be rounded. Please note; marks denoted \* are passing marks. The approximate position given is the pinnacle of the island or rock designated as a mark of the course.

<b>MARK</b>	<b>DESCRIPTION</b>	<b>POSITION</b>
Boondelbah Island	Island	Approx S 32° 42.44', E 152° 13.70'
Cabbage Tree Island	Island	Approx S 32° 41.26', E 152° 13.49'
Providence Bay Mark	Yellow Special Purpose Mark	Approx S 32° 40.53', E 152° 11.56'
Little Island	Island	Approx S 32° 42.06', E 152° 14.54'
Middle Ground Lateral Beacon	Maritime Beacon Green	Approx S 32° 42.63', E 152° 08.74'
Shoal Bay Mark	Yellow Triangle	Approx S 32° 42.85', E 152° 10.13'
Fullerton Cove Mark	Special Purpose Mark	Approx S 32 55.29', E 151 59.80'
Newcastle Harbour	Isolated Danger Mark	Approx S 32 53.81', E 151 51.00'

### **Long Islands Race** (Indicated by display of Numeral Pennant 1)

#### **Course "1" Distance: 16.9 nm approx**

<b>MARK</b>	<b>REQUIRED SIDE</b>
STARTING LINE	Shoal Bay Mark
Providence Bay Mark	Starboard
Cabbage Tree Island	Starboard
Little Island	Starboard
Boondelbah Island	Starboard
Middle Ground Lateral Beacon	Starboard
FINISH	Soldiers Point

### **Three Islands Race** (Indicated by display of Numeral Pennant 2)

#### **Course "2" Distance: 14.7 nm approx**

<b>MARK</b>	<b>REQUIRED SIDE</b>
STARTING LINE	Shoal Bay Mark
Cabbage Tree Island	Starboard
Little Island	Starboard
Boondelbah Island	Starboard
Middle Ground Lateral Beacon	Starboard
FINISH	Soldiers Point

**Two Islands Race** (Indicated by display of Numeral Pennant 3)

**Course “3” Distance: 13.5 nm approx**

MARK	REQUIRED SIDE
STARTING LINE	Shoal Bay Mark
Little Island	Starboard
Boondelbah Island	Starboard
Middle Ground Lateral Beacon	Starboard
FINISH	Soldiers Point

**Short Island Race** (Indicated by display of Numeral Pennant 4)

**Course “4” Distance: 11.7 nm approx**

MARK	REQUIRED SIDE
STARTING LINE	Shoal Bay Mark
Boondelbah Island	Starboard
Middle Ground Lateral Beacon	Starboard
FINISH	Soldiers Point

**Fullerton Cove Race** (Indicated by display of Numeral Pennant 5)

**Course “5” Distance: 18.9 nm approx**

MARK	REQUIRED SIDE
STARTING LINE	Shoal Bay Mark
FINISH	Fullerton Cove Special Purpose Mark

**Newcastle Race** (Indicated by display of Numeral Pennant 6)

**Course “6” Distance: 23.9 nm approx**

MARK	REQUIRED SIDE
STARTING LINE	Shoal Bay Mark
FINISH	Newcastle Isolated Danger Mark

**Nominated Race** (Indicated by display of Numeral Pennant 7)

**Course “7” Distance: TBA nm approx**

MARK	REQUIRED SIDE
STARTING LINE	As specified
Course Marks	As specified
FINISH	As specified