

PORT STEPHENS YACHT CLUB NOTICE OF RACE

OFFSHORE ISLAND RACES

Spring/Summer/Autumn 2019-20

Issued March 2020

1. RULES

- 1.1. Racing shall be conducted under the 2017-2020 Racing Rules of Sailing, and the prescriptions and safety regulations of Australian Sailing as modified by the PSYC Sailing Instructions. This Notice of Race or the Sailing Instructions may be altered, varied, deleted or added to by displaying a written notice in the form of an addendum or amendment on the PSYC Notice Board prior to 0900 hours on any race day, or communicated by the Race Starter on VHS CH77 before the Warning Signal (RRS 90.2c).
- 1.2. If there is a conflict between this Notice of Race and the Sailing Instructions then the Notice of Race shall take precedence.

2. ELIGIBILITY AND ENTRY

- 2.1 This race is opened to keel boats, trailer sailers and multihull classes that are racing members of the PSYC and have a current equipment audit of a least Cat 5, plus a registered EPIRB.
- 2.2 Eligible boats may enter by completing the Series Entry Form Season 2019 - 2020 and sending it to the Race Officer or Vice Commodore, PSYC, PO Box 319, Nelson Bay NSW 2315, OR emailing to rpacey86@hotmail.com OR delivering it to the club before their first race.
- 2.3. Single handing sailors must wear appropriate personal flotation device (PFD) at all times.
- 2.4. Visiting yachts – see the Entries clause of the Sailing Instructions.
- 2.5 All boats must register with Marine Rescue, Port Stephens before leaving the Port (VHF Channel 16 or using the Marine Rescue NSW mobile phone app). All boats must ensure that they contact Marine Rescue Port Stephens as they re-enter the Port to log off as well.

3. OFFSHORE RACING SERIES

- 3.1. The Offshore Racing Series will include 3 races with 3 to count as published on the PSYC Program on the Website and Club Noticeboard.
- 3.2. Entrants in Race 2 and 5 are to refer to the NCYC Website for NoRs and Sis for these events for details, noting the requirements for logging on and position reporting requirements.

Race 1 – Port Stephens to Newcastle	1200hrs Friday 18 October 2019	
Race 2 – Newcastle to Port Stephens – Conducted by NCYC	1000hrs Saturday 19 October 2019	https://www.ncyc.net.au/files/2019/09/Ocean-Pointscore-Sailing-Instructions-v2.pdf https://www.ncyc.net.au/files/2019/09/Ocean-Pointscore-Sailing-Instructions-v1-Appendix-2.pdf
Race 3 – Offshore Islands Race	1200hrs Saturday 14 March 2020	

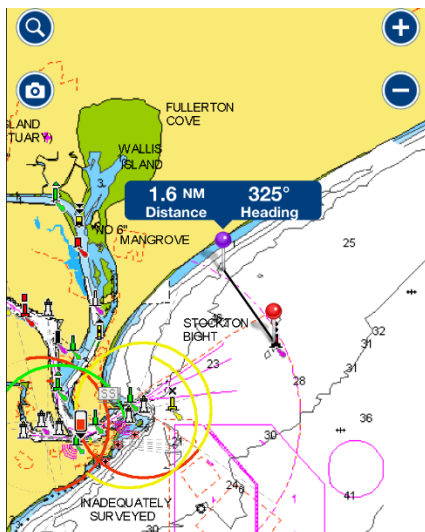
Race 4 – Port Stephens to Newcastle	1200hrs Friday 25 April 2020	
Race 5 – Newcastle to Port Stephens – Conducted by NCYC	1000hrs Sunday 26 April 2020	https://www.ncyc.net.au/files/2019/12/Notice-of-Race-v1.pdf

4. STARTING AND FINISHING

- 3.1 The Start Line will be an extension of a transit of the 4 knot marker and the Port Channel marker off the rock wall at Nelson Bay Harbour.
- 3.2 The start line for Port Stephens to Newcastle events may on consensus postpone the start to take place from an alternate line between the Port Stephens Lighthouse and a line at a bearing of 135 degrees magnetic at a distance of 0.7 nautical miles. The seaward end of the line is located at 32 45.40S 152 12.50E.



- 3.2 The finishing line for Port Stephens and Newcastle to Port Stephens courses will be the PSYC Soldiers Point Start/Finish line.
- 3.3 The finishing line for the Newcastle races will be a line between the isolated danger mark located 2nm North east of Newcastle Harbour and the coast at an imaginary line 325 degrees, see below. Yachts are required to record their own time.



- 3.4 The race may be shortened at a suitable location and time as agreed by the majority of boats racing and commuted to finish to the west of the Special Purpose mark, located at 32 55.228'S 151 59.804'E and a bearing of 325 degrees magnetic to shore via VHF Channel 77.



5. START TIME. AND FINISHING TIMES.

- 4.1 The start time will be 1200hrs.
- 4.2 Finishing times will be taken by the Club Starters or advised by skippers to the Race Officer via Radio to the Club Starters on VHF Channel 77. If there are no Club Starters available then via Race Sheet at the PSYC clubhouse.
- 4.3 A time limit of official sunset applies to all races.

6. COURSES

- 5.1 Courses are as on the attached Course Sheet.
- 5.2 Course to be sailed will be notified over the radio (VHF Channel 77) prior to the start.

7. SUPPORT BOATS

- 7.1. PSYC will designate an appropriate number and type of member yacht(s) participating in each PSYC on-water event, to act as Support Boats for that event.
- 7.2. Support Boats to be designated will be drawn from a list of appropriate member yachts qualified by the Race Committee from time to time.
- 7.3. Support Boats designation(s) will be notified by radio (Ch 77) from the Starters Caravan or by the Race Officer or Vice Commodore prior to the event.
- 7.4. Regardless of this Support Boat provision, attention of all event participants is drawn to Clause 25 of the current PSYC Sailing Instructions. Assistance to Vessel/Person in Distress.

8. ASSISTANCE TO VESSEL/PERSON IN DISTRESS

- 8.1. Fundamental Rule 1.1 in the Racing Rules of Sailing 2017-20 (RRS) and the International Convention for Safety of Life at Sea 2009 (SOLAS) and International Rules for Prevention of Collisions at Sea (COLREGS) and the NSW Marine Safety Act 1998 & General Regs 2009, make it the responsibility of all skippers to respond to calls for assistance by another yacht or person in distress.
- 8.2. A skipper or Support Boat responding to a call for assistance may take a record of the time that the yacht leaves the race to provide the assistance and the time that yacht resumes racing after providing assistance for purposes of requesting Redress.
- 8.3. A Request for Redress must be lodged with the Starter or a member of the Race Committee as soon as possible after the yacht finishes. An adjustment to the yacht's elapsed time for the race will be made when the results are calculated.

9. DISCLAIMER

- 9.1. All those taking part in PSYC races do so at their own risk and responsibility. The PSYC is not responsible for the seaworthiness of a yacht, the sufficiency or adequacy of its equipment or the competency of its crew.
- 9.2. The PSYC reserves the right to refuse entry to any yacht at any time.
- 9.3. Attention is drawn to the Fundamental Rule 4 which states "A boat is solely responsible for deciding whether or not to start or to continue racing.

10. INSURANCE

- 10.1. All yachts participating in PSYC events, including cruises, are required to have valid and current third party liability insurance which includes indemnity for the PSYC.

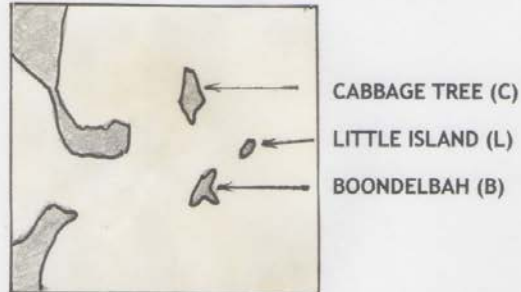
11. FURTHER INFORMATION

For further information please contact:

Rick Pacey - Vice Commodore
Port Stephens Yacht Club
Phone 0417 544 230 or Email – rpacey86@hotmail.com

John Glease - Club Captain
Port Stephens Yacht Club
Phone 0403 524 083
Email – johnglease@hotmail.com

OFF-SHORE COURSES



- | | |
|-------------|---|
| 1 STARBOARD | START C. L. B. FINISH |
| 1 PORT | START B. L. C. FINISH |
|
 | |
| 2 STARBOARD | START B. C. FINISH |
| 2 PORT | START C. B. FINISH |
|
 | |
| 3 STARBOARD | START L. B. L. B. FINISH |
| 3 PORT | START B. L. B. L. FINISH |
|
 | |
| 4 STARBOARD | START L. C. B. FINISH |
| 4 PORT | START B. C. L. FINISH |
|
 | |
| 5 BAY RACE# | START SB(P). SAL. WC(P). MI. GI(P) FINISH |

NOTE:
 THE START FOR ALL COURSES IS A TRANSIT LINE AT FLY POINT (NOT NELSON HEAD) AS PER THE DIAGRAM AT RIGHT, THE FINISH FOR ALL COURSES IS AT THE CLUB CARAVAN.

IN CASE IT IS DECIDED NOT TO VENTURE OUT THE HEADS

